



MERINGUË



ACIER



HIVER 2019

# ACIER MERINGUË

HIVER 2019



## **PRET A PORTER**

MALIPARMI  
OTTOD'AME  
CT.PLAGE  
APUNTO.B  
P.M.R 76  
WHITE SAND  
120% CASHMERE  
GRAND MORIN

## **ECHARPES**

PIN 1876  
ODILE GASTON

## **SACS**

CAMPOMAGGI  
CATERINA LUCCHI  
WELA ROCAT

## **CHAPEAUX**

GI'NGI

## **BIJOUX**

TOYA DE CARLO  
BIJOUX RENARD  
TATABORELLO

## **CHAUSSURES**

BOSABO  
PREVENTI  
DELAVE

## **CEINTURES**

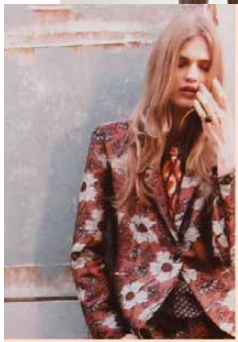
LAS PAMPAS  
CAMPOMAGGI

Illustration couverture :  
Chris Gambrell (@gambrell\_)

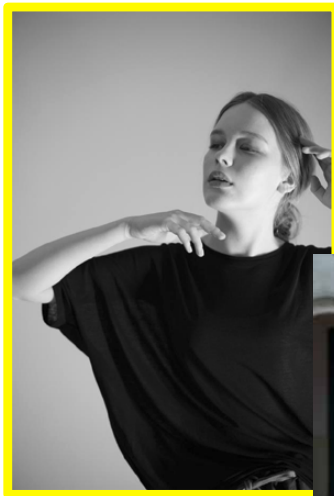
# MALIPARMI



# ottod'Ame



C.T.plage



a punto b







# WhiteSand

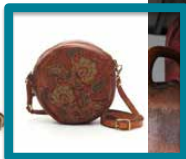
120%  
cashmere





# CAMPOMAGGI

## FEMME





# CAMPOMAGGI'

## HOMME



# CATERINA LUCCHI



# WELA ROCAT



**BOSABO**  
DEPUIS 1895  
FABRIQUÉ EN FRANCE



preventi



DE LAV È



ODILE GASTON



GRAND MORIN



# TOYA DE CARLOS

P De Las Pampas







totaborello  
OFFICINA BIJOUX



RENARD BIJOUX





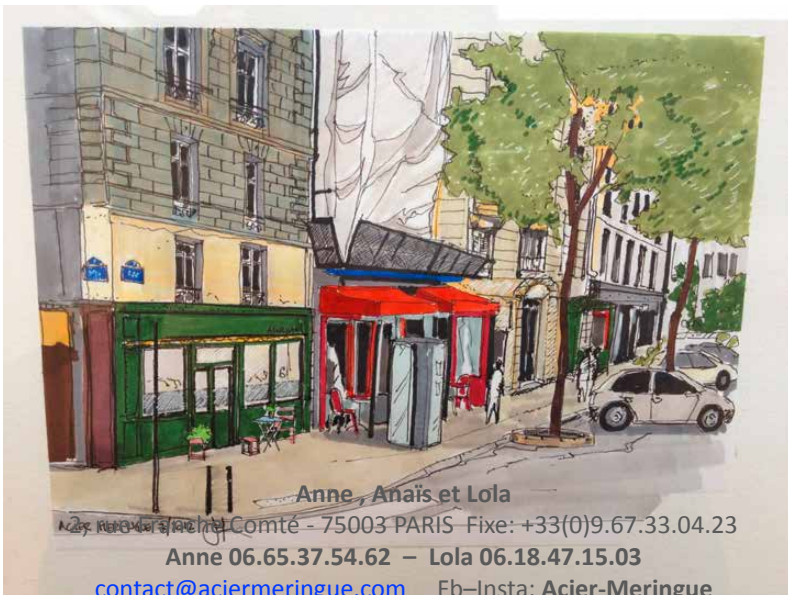
Venez découvrir notre site : [www.aciermeringue.com](http://www.aciermeringue.com)



Showroom Acier Meringue  
[www.aciermeringue.com](http://www.aciermeringue.com)

*Ana Cherry*

# SHOWROOM ACIER MERINGUE



Anne, Anaïs et Lola

2, rue de la Comté - 75003 PARIS - Fixe: +33(0)9.67.33.04.23

Anne 06.65.37.54.62 - Lola 06.18.47.15.03

[contact@aciermeringue.com](mailto:contact@aciermeringue.com) Fb-Insta: Acier-Meringue

[Aciermeringue.com](http://Aciermeringue.com)